

FROM THE FAMILY ALBUM OF CHARLES SCHMITT



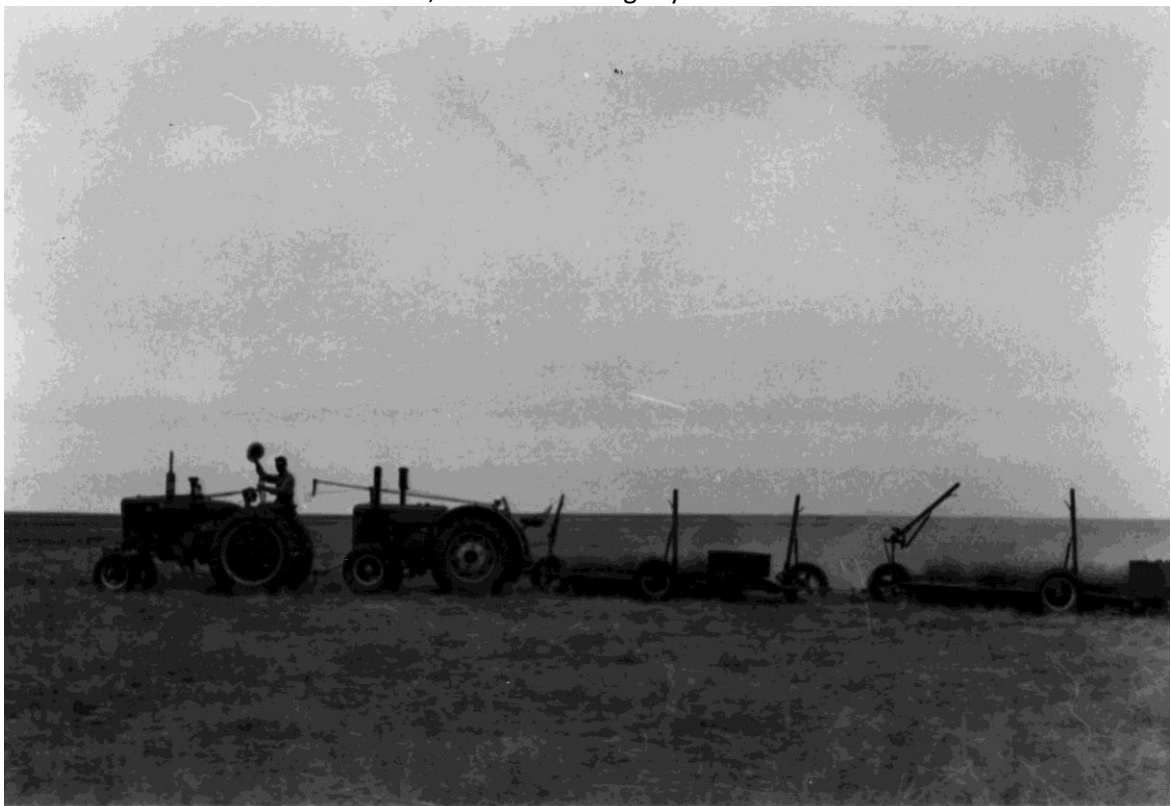
Alfons Schmitt, 1915 when Alfons was 19 years old. An International harvester 8-16 had a Mogul single cylinder engine with a large fly wheel. It is pulling a four bottom 14" moldboard. During potato planting, the moldboard had a platform with a seat on it where someone sat to drop seed potatoes down a tube that was fastened behind the first moldboard and into the furrow. The second moldboard would then cover it up.



Alfred Schmitt(Charles' brother) is on the 1929 Chevrolet truck. Alfons Schmitt (Charles' father) and Harold (Charles' brother) are pitching bundles into 1912 Case 32" threshing machine which Alfons had bought used and repaired. The thresher had flat belts which would slip when dust got on them. Karo Syrup was put on the belts to create traction. Charles is sitting on the 1937 John Deere D tractor. The thresher is now at Edwards County Museum. Picture was probably taken in 1941.



Hired hands from Missouri stacking grain (oat or barley). 1937 John Deere D tractor. From the condition of wheat, this was a drought year in the 1930s.



Wild Horse Colo - 1953

Wild Horse, Colorado - 1953. Farmall M International Harvester tractor followed by a John Deere tractor, pulling a 12' Krause oneway plow and 10' Krause oneway plow. The large rod going from the Farmall M to the John Deere allowed the driver to control the clutch. The smaller rod controlled the throttle. Taken during summer fallow plowing. Charles and his brother in-law, Lawrence Herrmann, crop shared Henry Kleason's property which was 40 acres by one mile long.