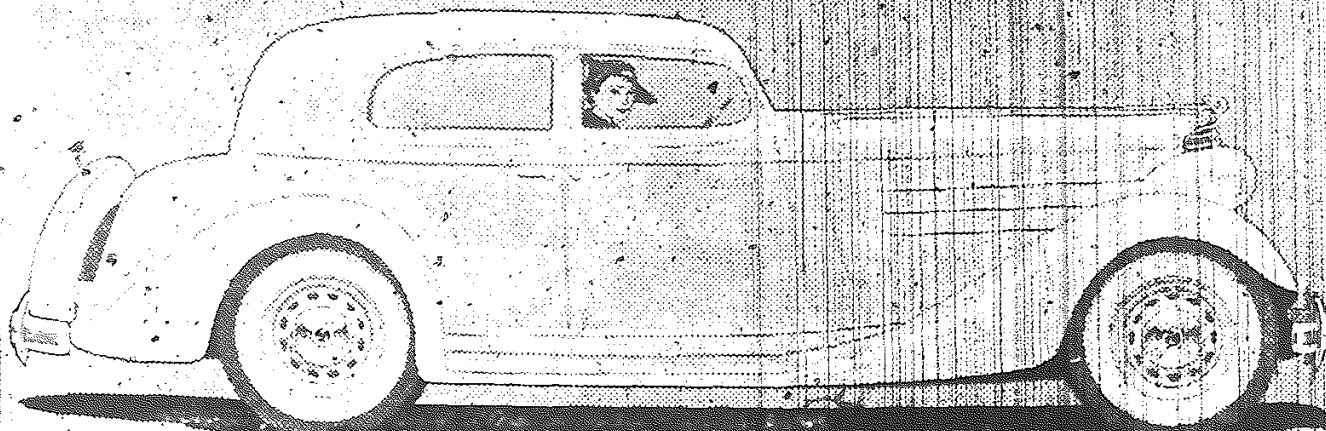


*In the lowest price field...*

**BUT IT PUTS YOU IN THE BIG-CAR CLASS**



**LAFAYETTE \$580\***

***Big Car* PERFORMANCE**

LaFayette gives you eighty horsepower and eighty miles an hour at low engine speed. Fast, nimble, responsive—and built for the smooth, quiet long-life you expect only in expensive cars. LaFayette *drives* with remarkable ease.

***Big Car* SIZE**

Nearly 16 ft. long—5 ft. wide at rear tread. LaFayette is actually 1" wider, within 2½" of average length of cars up to \$300 higher.

***Big Car* RIDE**

Exclusive in Nash-built cars, Synchronized Springing *ends back seat bounce*—a uniform, level ride in both front *and* rear seats.

***Big Car* CONSTRUCTION**

Full pressure lubrication, 7-bearing crankshaft, hollow crank-pins, aluminum alloy Invar strut pistons, oversize electrical system—and more other fine-car construction features than any of the 21 other cars under \$895.

*And up, F. O. B. factory. Subject to change without notice. Your present car usually covers down payment.*

**SEE IT—DRIVE IT—COMPARE IT—BEFORE YOU BUY ANY CAR**

**FAHLSING GARAGE**

**Kinsley, Kansas**