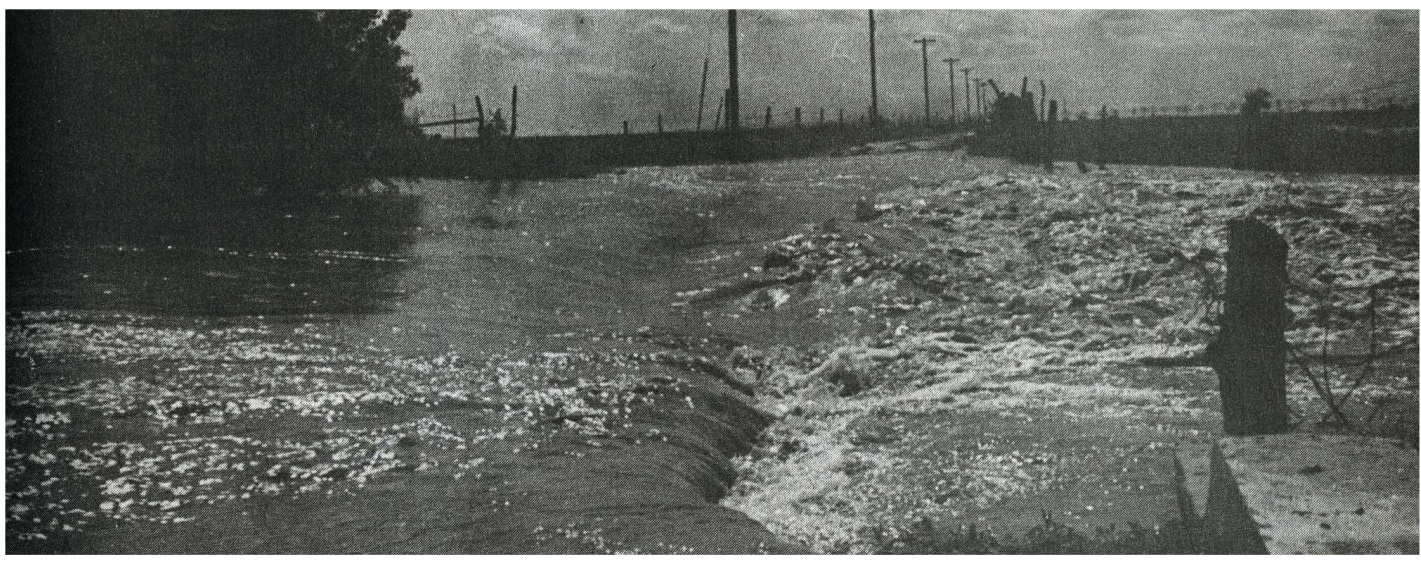


The 1950s



Edwards County Centennial Book p. 215

MAINLY A TIME OF DOUGHT EXCEPT...

Kinsley Mercury
May 10, 1951

Farmers to Hear About Rain Making Here Monday Night

Official of Water Resources Development
Corp. Will Speak; Everyone Invited to
Attend Meeting in H. S. Auditorium

Edwards county farmers will meet in the Kinsley high school auditorium Monday night at eight o'clock to hear about rain making. A representative of the Water Resources Development Corp. will be at the meeting to explain how clouds are "seeded" with silver iodide to cause rain.

Leo Copp, president of the Edwards County Farm Bureau, has called the meeting. Everyone is invited to attend. If farmers are in favor of joining with other counties south and west of here, meetings for each township will be held following the general meeting. Other counties in the organization that Edwards county has been invited to join, have already organized so this county will have to act at once in order to join the organization.

More than 75 per cent of the farmers in Kiowa county have signed for the rain service, according to Keith Sherer of Mullinville.

Cloud seeding with silver iodide particles was begun four years ago. In early experiments, clouds were seeded by airplane, but now the seeding is done by using generators on the ground.

Other counties in the organization that Edwards county has been asked to join are Kiowa, Meade, Clark, Comanche, Barber, Ford and several counties in Oklahoma. John Briggs, Protection rancher who has helped organize this district, will be at the meeting here Monday night.

May 17, 1951

Ask for Another Meeting To Give "Rain" Information

Those Present at Monday Night Meeting Vote to Join
Other Counties to Contract for Rain Service
and Weather Forecasting

An inch of moisture Monday apparently held down the attendance at the "rain" meeting Monday night. All but one of the farmers attending the meeting—approximately fifty—were in favor of Edwards county joining in the rain making venture.

However, those present were of the opinion that it would be much easier for their neighbors to come to a meeting similar to the one held Monday night to learn all about the experiment rather than solicitors taking an hour or two at each call to do the explaining.

They hope to have another meeting soon if a speaker is available. However, since Monday night there has been some doubt whether some of the counties will raise their money. If the counties south and west of Edwards county do not sign a contract, this county cannot get the service at the low rate.

Mr. Cox of the Water Resources Development Corp., who had been speaking at meetings daily explaining the proposition, was taken ill while at Liberal Saturday and was taken to a Guymon, Okla., hospital, where his illness was diagnosed as pneumonia. John Briggs of Protection, chairman of the rain district, talked in his place.

Mr. Briggs invited Edwards county to join the rain district if adjoining counties are successful in raising their money. If Kiowa and Ford counties do not complete their arrangements it will be impossible for Edwards county to join as this county is at the north and east edge of the district. Mr. Briggs said that they would know about the adjoining counties by next week. He stated this morning that the Texas and Oklahoma panhandle counties have signed a "rain" contract.

"Cloud seeding started with the use of dry ice scattered with the use of airplanes," Mr. Briggs said. "The strip covered by rain would be just as wide as the strip covered by the plane. For 15 years it has been known that rain could be produced by using dry ice. For three years it has been known that rain could be produced by sending silver iodide crystals into the clouds from generators on the ground."

The weather predicting part of the service offered by the Water Resources Development Corp. is very important, Mr. Briggs said. He said present plans call for the farm bureau to handle reports for each county where the county rain making organization wishes. He said the service will call for specific weather forecasting for each county rather than for an area as big as Southwest Kansas.

He quoted Dr. Kirk as saying

Put off "Rain" Work Until 1952

Abundant Rains
Cause Less Interest
In "Rain Making"

Raising of money to hire a "rain maker" has been postponed until April of 1952, according to John Briggs of Protection who was elected chairman of the proposed "rain" district. Of the counties included in the rain district only one had raised its quota—that was Mr. Briggs' home county of Comanche.

Kiowa and Barber counties had raised half of their quota. The townships in the east half of Kiowa county had raised their money but the townships in the east half of the county had not been very active.

The counties in the Texas and Oklahoma panhandle that were to be associated with Kansas counties in the district of which Edwards county was the northeast corner have signed a contract for rain service.

All money already raised will be returned and the men who have done the work and incurred expenses will pay all the expenses, Mr. Briggs told a Mercury reporter this week.

May 24, 1951

At one time Saturday night there were four men stationed at the east river bridge. Representatives of three different government agencies: Two were from the army engineers department at Albuquerque, one from the Geological survey, which department keeps the gauge at the east river bridge all the time, and the other was from a state department.

The geological department checks the gauge at the river every four weeks. There is an automatic recording device connected with the river gauge.

One of the engineers gave out the information that the Arkansas river measures 82 miles from Kinsley to Dodge City.

Rev. Lewis Fowler, new pastor of the Christian church, was put right to work when he answered the whistle call for volunteers Saturday night. He helped direct traffic at Niles and 50S highway.

Although E. J. Farlow placed a sign back around his garage in South Dodge City ahead of the flood there, the water did not get anywhere near his garage building.

The water which came up high Saturday night didn't break through at the south river bridge as many persons believed. It flooded the river and the road and the highway.

Travelers slow down at an estimated two miles per hour. The water first broke out of the river near the Schaller ranch at 8:30 a. m. Saturday. Later water broke out of the river near the old Reel Harlow Anderson's farm and it didn't reach the city in highway until about 9 p. m. Saturday night. The engineers stated that it took 36 hours for the crest to travel from Dodge City to Kinsley.

The city diked the river bank from the south river bridge to the first section line west and the water was lapping at the top during the highest point.

Mr. and Mrs. Frank Anderson went to Hays Wednesday morning for their son Jack who has been attending school there. He was safe from the flood dangers in Hays Tuesday. His car had been once company would not permit them to drive the car because of the water in the motor and gear cases.

Helen Owen brought a 10 lb. carp to the Mercury office the last of the week. She caught it in her hands in the flood water at the back steps of their home.

Mrs. Ben Prather has a 10 lb. round carp in a wash tub at their place as a memento of the flood. Mr. and Mrs. Prather were on their front porch playing cards when they heard a noise like something walking down the side. Prather investigated and found a big carp on the water, covered sidewalk flopping around.

Flood Water Threatens City Twice During Week's Time Still Lots of Water Surrounding Kinsley At Press Time Today; River and Creek are Going Down

The fire siren announced a flood threat twice during the past week—Saturday and Tuesday nights.

The river threatened to come to town Saturday night but Coon creek was able to take care of the water and the flood did not extend north of the creek in town.

Tuesday night Coon creek overflowed, covering sections of the north and east parts of town. Four or five families were evacuated Tuesday night by workers who responded to the fire siren.

Lloyd Rumsey and Sam Coover headed a rescue party, using the Rumsey row boat. Mrs. Edith Nolde and three children were rescued from their home just north of the Lincoln grade school building. One of the children was ill in bed. The family was taken to the Kinsley hotel.

Because of built-up highways flood water came into town in a different way than it has other times. Dry Coon creek, coming into town from the north and northwest, caused trouble in the north part of town soon after dark Tuesday night. Regular Coon creek soon dumped some water into Dry. Coon creek to make the rise quite rapid.

Water was all off Marsh avenue bridge on Niles avenue south on highway 183 there was considerable water still coming in from the river, although the river and the creek are both way down this morning. Water has been flowing into the creek from the river at the Niles avenue bridge since Saturday night.

Residents in the new Hart addition in the northeast part of town did considerable work to dike along the road that goes along the city limits at the east edge of the addition, but water came in from the west finally. Water did not enter any of the houses in the streets and yards. Underflow caused many floor furnaces to be moved.

The county engineer will make a complete report on the damage done to property, crops, etc. Cop-ineers and the county commissioners.

Ten army engineers from the Albuquerque, N. M., headquarters were in Kinsley Friday and Saturday. Two men were stationed at the east river bridge those two days to measure the speed of the river and the quantity of water.

The army engineers brought a thousand sacks to Kinsley Saturday morning to be used in making sand bags.

Sand bags were placed at the doors of the city auditorium in South park.

At one time Saturday night there were four men stationed at the east river bridge. Representatives of three different government agencies: Two were from the army engineers department at Albuquerque, one from the Geological survey, which department keeps the gauge at the east river bridge all the time, and the other was from a state department.

The geological department checks the gauge at the river every four weeks. There is an automatic recording device connected with the river gauge.

One of the engineers gave out the information that the Arkansas river measures 82 miles from Kinsley to Dodge City.

Rev. Lewis Fowler, new pastor of the Christian church, was put right to work when he answered the whistle call for volunteers Saturday night. He helped direct traffic at Niles and 50S highway.

Although E. J. Farlow placed a sign back around his garage in South Dodge City ahead of the flood there, the water did not get anywhere near his garage building.

The water which came up high Saturday night didn't break through at the south river bridge as many persons believed. It flooded the river and the road and the highway.

Travelers slow down at an estimated two miles per hour. The water first broke out of the river near the Schaller ranch at 8:30 a. m. Saturday. Later water broke out of the river near the old Reel Harlow Anderson's farm and it didn't reach the city in highway until about 9 p. m. Saturday night. The engineers stated that it took 36 hours for the crest to travel from Dodge City to Kinsley.

The city diked the river bank from the south river bridge to the first section line west and the water was lapping at the top during the highest point.

Mr. and Mrs. Frank Anderson went to Hays Wednesday morning for their son Jack who has been attending school there. He was safe from the flood dangers in Hays Tuesday. His car had been once company would not permit them to drive the car because of the water in the motor and gear cases.

Helen Owen brought a 10 lb. carp to the Mercury office the last of the week. She caught it in her hands in the flood water at the back steps of their home.

Mrs. Ben Prather has a 10 lb. round carp in a wash tub at their place as a memento of the flood. Mr. and Mrs. Prather were on their front porch playing cards when they heard a noise like something walking down the side. Prather investigated and found a big carp on the water, covered sidewalk flopping around.

At one time Saturday night there were four men stationed at the east river bridge. Representatives of three different government agencies: Two were from the army engineers department at Albuquerque, one from the Geological survey, which department keeps the gauge at the east river bridge all the time, and the other was from a state department.

The geological department checks the gauge at the river every four weeks. There is an automatic recording device connected with the river gauge.

One of the engineers gave out the information that the Arkansas river measures 82 miles from Kinsley to Dodge City.

Rev. Lewis Fowler, new pastor of the Christian church, was put right to work when he answered the whistle call for volunteers Saturday night. He helped direct traffic at Niles and 50S highway.

Although E. J. Farlow placed a sign back around his garage in South Dodge City ahead of the flood there, the water did not get anywhere near his garage building.

The water which came up high Saturday night didn't break through at the south river bridge as many persons believed. It flooded the river and the road and the highway.

Travelers slow down at an estimated two miles per hour. The water first broke out of the river near the Schaller ranch at 8:30 a. m. Saturday. Later water broke out of the river near the old Reel Harlow Anderson's farm and it didn't reach the city in highway until about 9 p. m. Saturday night. The engineers stated that it took 36 hours for the crest to travel from Dodge City to Kinsley.

The city diked the river bank from the south river bridge to the first section line west and the water was lapping at the top during the highest point.

Mr. and Mrs. Frank Anderson went to Hays Wednesday morning for their son Jack who has been attending school there. He was safe from the flood dangers in Hays Tuesday. His car had been once company would not permit them to drive the car because of the water in the motor and gear cases.

Helen Owen brought a 10 lb. carp to the Mercury office the last of the week. She caught it in her hands in the flood water at the back steps of their home.

Mrs. Ben Prather has a 10 lb. round carp in a wash tub at their place as a memento of the flood. Mr. and Mrs. Prather were on their front porch playing cards when they heard a noise like something walking down the side. Prather investigated and found a big carp on the water, covered sidewalk flopping around.

At one time Saturday night there were four men stationed at the east river bridge. Representatives of three different government agencies: Two were from the army engineers department at Albuquerque, one from the Geological survey, which department keeps the gauge at the east river bridge all the time, and the other was from a state department.

The geological department checks the gauge at the river every four weeks. There is an automatic recording device connected with the river gauge.

One of the engineers gave out the information that the Arkansas river measures 82 miles from Kinsley to Dodge City.

Rev. Lewis Fowler, new pastor of the Christian church, was put right to work when he answered the whistle call for volunteers Saturday night. He helped direct traffic at Niles and 50S highway.

Although E. J. Farlow placed a sign back around his garage in South Dodge City ahead of the flood there, the water did not get anywhere near his garage building.

The water which came up high Saturday night didn't break through at the south river bridge as many persons believed. It flooded the river and the road and the highway.

Travelers slow down at an estimated two miles per hour. The water first broke out of the river near the Schaller ranch at 8:30 a. m. Saturday. Later water broke out of the river near the old Reel Harlow Anderson's farm and it didn't reach the city in highway until about 9 p. m. Saturday night. The engineers stated that it took 36 hours for the crest to travel from Dodge City to Kinsley.

The city diked the river bank from the south river bridge to the first section line west and the water was lapping at the top during the highest point.

Mr. and Mrs. Frank Anderson went to Hays Wednesday morning for their son Jack who has been attending school there. He was safe from the flood dangers in Hays Tuesday. His car had been once company would not permit them to drive the car because of the water in the motor and gear cases.

Helen Owen brought a 10 lb. carp to the Mercury office the last of the week. She caught it in her hands in the flood water at the back steps of their home.

Mrs. Ben Prather has a 10 lb. round carp in a wash tub at their place as a memento of the flood. Mr. and Mrs. Prather were on their front porch playing cards when they heard a noise like something walking down the side. Prather investigated and found a big carp on the water, covered sidewalk flopping around.

At one time Saturday night there were four men stationed at the east river bridge. Representatives of three different government agencies: Two were from the army engineers department at Albuquerque, one from the Geological survey, which department keeps the gauge at the east river bridge all the time, and the other was from a state department.

The geological department checks the gauge at the river every four weeks. There is an automatic recording device connected with the river gauge.

One of the engineers gave out the information that the Arkansas river measures 82 miles from Kinsley to Dodge City.

Rev. Lewis Fowler, new pastor of the Christian church, was put right to work when he answered the whistle call for volunteers Saturday night. He helped direct traffic at Niles and 50S highway.

Although E. J. Farlow placed a sign back around his garage in South Dodge City ahead of the flood there, the water did not get anywhere near his garage building.

The water which came up high Saturday night didn't break through at the south river bridge as many persons believed. It flooded the river and the road and the highway.

Travelers slow down at an estimated two miles per hour. The water first broke out of the river near the Schaller ranch at 8:30 a. m. Saturday. Later water broke out of the river near the old Reel Harlow Anderson's farm and it didn't reach the city in highway until about 9 p. m. Saturday night. The engineers stated that it took 36 hours for the crest to travel from Dodge City to Kinsley.

The city diked the river bank from the south river bridge to the first section line west and the water was lapping at the top during the highest point.

Mr. and Mrs. Frank Anderson went to Hays Wednesday morning for their son Jack who has been attending school there. He was safe from the flood dangers in Hays Tuesday. His car had been once company would not permit them to drive the car because of the water in the motor and gear cases.

Helen Owen brought a 10 lb. carp to the Mercury office the last of the week. She caught it in her hands in the flood water at the back steps of their home.

Mrs. Ben Prather has a 10 lb. round carp in a wash tub at their place as a memento of the flood. Mr. and Mrs. Prather were on their front porch playing cards when they heard a noise like something walking down the side. Prather investigated and found a big carp on the water, covered sidewalk flopping around.

At one time Saturday night there were four men stationed at the east river bridge. Representatives of three different government agencies: Two were from the army engineers department at Albuquerque, one from the Geological survey, which department keeps the gauge at the east river bridge all the time, and the other was from a state department.

The geological department checks the gauge at the river every four weeks. There is an automatic recording device connected with the river gauge.

One of the engineers gave out the information that the Arkansas river measures 82 miles from Kinsley to Dodge City.

Rev. Lewis Fowler, new pastor of the Christian church, was put right to work when he answered the whistle call for volunteers Saturday night. He helped direct traffic at Niles and 50S highway.

Although E. J. Farlow placed a sign back around his garage in South Dodge City ahead of the flood there, the water did not get anywhere near his garage building.

The water which came up high Saturday night didn't break through at the south river bridge as many persons believed. It flooded the river and the road and the highway.

Travelers slow down at an estimated two miles per hour. The water first broke out of the river near the Schaller ranch at 8:30 a. m. Saturday. Later water broke out of the river near the old Reel Harlow Anderson's farm and it didn't reach the city in highway until about 9 p. m. Saturday night. The engineers stated that it took 36 hours for the crest to travel from Dodge City to Kinsley.

The city diked the river bank from the south river bridge to the first section line west and the water was lapping at the top during the highest point.

Mr. and Mrs. Frank Anderson went to Hays Wednesday morning for their son Jack who has been attending school there. He was safe from the flood dangers in Hays Tuesday. His car had been once company would not permit them to drive the car because of the water in the motor and gear cases.

Helen Owen brought a 10 lb. carp to the Mercury office the last of the week. She caught it in her hands in the flood water at the back steps of their home.

Mrs. Ben Prather has a 10 lb. round carp in a wash tub at their place as a memento of the flood. Mr. and Mrs. Prather were on their front porch playing cards when they heard a noise like something walking down the side. Prather investigated and found a big carp on the water, covered sidewalk flopping around.

At one time Saturday night there were four men stationed at the east river bridge. Representatives of three different government agencies: Two were from the army engineers department at Albuquerque, one from the Geological survey, which department keeps the gauge at the east river bridge all the time, and the other was from a state department.

The geological department checks the gauge at the river every four weeks. There is an automatic recording device connected with the river gauge.

One of the engineers gave out the information that the Arkansas river measures 82 miles from Kinsley to Dodge City.

Rev. Lewis Fowler, new pastor of the Christian church, was put right to work when he answered the whistle call for volunteers Saturday night. He helped direct traffic at Niles and 50S highway.

Although E. J. Farlow placed a sign back around his garage in South Dodge City ahead of the flood there, the water did not get anywhere near his garage building.

The water which came up high Saturday night didn't break through at the south river bridge as many persons believed. It flooded the river and the road and the highway.

Travelers slow down at an estimated two miles per hour. The water first broke out of the river near the Schaller ranch at 8:30 a. m. Saturday. Later water broke out of the river near the old Reel Harlow Anderson's farm and it didn't reach the city in highway until about 9 p. m. Saturday night. The engineers stated that it took 36 hours for the crest to travel from Dodge City to Kinsley.

The city diked the river bank from the south river bridge to the first section line west and the water was lapping at the top during the highest point.

Mr. and Mrs. Frank Anderson went to Hays Wednesday morning for their son Jack who has been attending school there. He was safe from the flood dangers in Hays Tuesday. His car had been once company would not permit them to drive the car because of the water in the motor and gear cases.

Helen Owen brought a 10 lb. carp to the Mercury office the last of the week. She caught it in her hands in the flood water at the back steps of their home.

Mrs. Ben Prather has a 10 lb. round carp in a wash tub at their place as a memento of the flood. Mr. and Mrs. Prather were on their front porch playing cards when they heard a noise like something walking down the side. Prather investigated and found a big carp on the water, covered sidewalk flopping around.

At one time Saturday night there were four men stationed at the east river bridge. Representatives of three different government agencies: Two were from the army engineers department at Albuquerque, one from the Geological survey, which department keeps the gauge at the east river bridge all the time, and the other was from a state department.

The geological department checks the gauge at the river every four weeks. There is an automatic recording device connected with the river gauge.

One of the engineers gave out the information that the Arkansas river measures 82 miles from Kinsley to Dodge City.

Rev. Lewis Fowler, new pastor of the Christian church, was put right to work when he answered the whistle call for volunteers Saturday night. He helped direct traffic at Niles and 50S highway.

Although E. J. Farlow placed a sign back around his garage in South Dodge City ahead of the flood there, the water did not get anywhere near his garage building.

The water which came up high Saturday night didn't break through at the south river bridge as many persons believed. It flooded the river and the road and the highway.

Travelers slow down at an estimated two miles per hour. The water first broke out of the river near the Schaller ranch at 8:30 a. m. Saturday. Later water broke out of the river near the old Reel Harlow Anderson's farm and it didn't reach the city in highway until about 9 p. m. Saturday night. The engineers stated that it took 36 hours for the crest to travel from Dodge City to Kinsley.

The city diked the river bank from the south river bridge to the first section line west and the water was lapping at the top during the highest point.

Mr. and Mrs. Frank Anderson went to Hays Wednesday morning for their son Jack who has been attending school there. He was safe from the flood dangers in Hays Tuesday. His car had been once company would not permit them to drive the car because of the water in the motor and gear cases.

Helen Owen brought a 10 lb. carp to the Mercury office the last of the week. She caught it in her hands in the flood water at the back steps of their home.

Mrs. Ben Prather has a 10 lb. round carp in a wash tub at their place as a memento of the flood. Mr. and Mrs. Prather were on their front porch playing cards when they heard a noise like something walking down the side. Prather investigated and found a big carp on the water, covered sidewalk flopping around.

At one time Saturday night there were four men stationed at the east river bridge. Representatives of three different government agencies: Two were from the army engineers department at Albuquerque, one from the Geological survey, which department keeps the gauge at the east river bridge all the time, and the other was from a state department.

The geological department checks the gauge at the river every four weeks. There is an automatic recording device connected with the river gauge.

One of the engineers gave out the information that the Arkansas river measures 82 miles from Kinsley to Dodge City.

Rev. Lewis Fowler, new pastor of the Christian church, was put right to work when he answered the whistle call for volunteers Saturday night. He helped direct traffic at Niles and 50S highway.

Although E. J. Farlow placed a sign back around his garage in South Dodge City ahead of the flood there, the water did not get anywhere near his garage building.

The water which came up high Saturday night didn't break through at the south river bridge as many persons believed. It flooded the river and the road and the highway.

Travelers slow down at an estimated two miles per hour. The water first broke out of the river near the Schaller ranch at 8:30 a. m. Saturday. Later water broke out of the river near the old Reel Harlow Anderson's farm and it didn't reach the city in highway until about 9 p. m. Saturday night. The engineers stated that it took 36 hours for the crest to travel from Dodge City to Kinsley.

The city diked the river bank from the south river bridge to the first section line west and the water was lapping at the top during the highest point.

Mr. and Mrs. Frank Anderson went to Hays Wednesday morning for their son Jack who has been attending school there. He was safe from the flood dangers in Hays Tuesday. His car had been once company would not permit them to drive the car because of the water in the motor and gear cases.

Helen Owen brought a 10 lb. carp to the Mercury office the last of the week. She caught it in her hands in the flood water at the back steps of their home.

Mrs. Ben Prather has a 10 lb. round carp in a wash tub at their place as a memento of the flood. Mr. and Mrs. Prather were on their front porch playing cards when they heard a noise like something walking down the side. Prather investigated and found a big carp on the water, covered sidewalk flopping around.

At one time Saturday night there were four men stationed at the east river bridge. Representatives of three different government agencies: Two were from the army engineers department at Albuquerque, one from the Geological survey, which department keeps the gauge at the east river bridge all the time, and the other was from a state department.

The geological department checks the gauge at the river every four weeks. There is an automatic recording device connected with the river gauge.

One of the engineers gave out the information that the Arkansas river measures 82 miles from Kinsley to Dodge City.

Rev. Lewis Fowler, new pastor of the Christian church, was put right to work when he answered the whistle call for volunteers Saturday night. He helped direct traffic at Niles and 50S highway.

Although E. J. Farlow placed a sign back around his garage in South Dodge City ahead of the flood there, the water did not get anywhere near his garage building.

The water which came up high Saturday night didn't break through at the south river bridge as many persons believed. It flooded the river and the road and the highway.

Travelers slow down at an estimated two miles per hour. The water first broke out of the river near the Schaller ranch at 8:30 a. m. Saturday. Later water broke out of the river near the old Reel Harlow Anderson's farm and it didn't reach the city in highway until about 9 p. m. Saturday night. The engineers stated that it took 36 hours for the crest to travel from Dodge City to Kinsley.

The city diked the river bank from the south river bridge to the first section line west and the water was lapping at the top during the highest point.

Mr. and Mrs. Frank Anderson went to Hays Wednesday morning for their son Jack who has been attending school there. He was safe from the flood dangers in Hays Tuesday. His car had been once company would not permit them to drive the car because of the water in the motor and gear cases.

Helen Owen brought a 10 lb. carp to the Mercury office the last of the week. She caught it in her hands in the flood water at the back steps of their home.

Mrs. Ben Prather has a 10 lb. round carp in a wash tub at their place as a memento of the flood. Mr. and Mrs. Prather were on their front porch playing cards when they heard a noise like something walking down the side. Prather investigated and found a big carp on the water, covered sidewalk flopping around.

At one time Saturday night there were four men stationed at the east river bridge. Representatives of three different government agencies: Two were from the army engineers department at Albuquerque, one from the Geological survey, which department keeps the gauge at the east river bridge all the time, and the other was from a state department.

The geological department checks the gauge at the river every four weeks. There is an automatic recording device connected with the river gauge.

One of the engineers gave out the information that the Arkansas river measures 82 miles from Kinsley to Dodge City.

Rev. Lewis Fowler, new pastor of the Christian church, was put right to work when he answered the whistle call for volunteers Saturday night. He helped direct traffic at Niles and 50S highway.

Although E. J. Farlow placed a sign back around his garage in South Dodge City ahead of the flood there, the water did not get anywhere near his garage building.

The water which came up high Saturday night didn't break through at the south river bridge as many persons believed. It flooded the river and the road and the highway.

Travelers slow down at an estimated two miles per hour. The water first broke out of the river near the Schaller ranch at 8:30 a. m. Saturday. Later water broke out of the river near the old Reel Harlow Anderson's farm and it didn't reach the city in highway until about 9 p. m. Saturday night. The engineers stated that it took 36 hours for the crest to travel from Dodge City to Kinsley.

The city diked the river bank from the south river bridge to the first section line west and the water was lapping at the top during the highest point.

Mr. and Mrs. Frank Anderson went to Hays Wednesday morning for their son Jack who has been attending school there. He was safe from the flood dangers in Hays Tuesday. His car had been once company would not permit them to drive the car because of the water in the motor and gear cases.

Helen Owen brought a 10 lb. carp to the Mercury office the last of the week. She caught it in her hands in the flood water at the back steps of their home.

Mrs. Ben Prather has a 10 lb. round carp in a wash tub at their place as a memento of the flood. Mr. and Mrs. Prather were on their front porch playing cards when they heard a noise like something walking down the side. Prather investigated and found a big carp on the water, covered sidewalk flopping around.