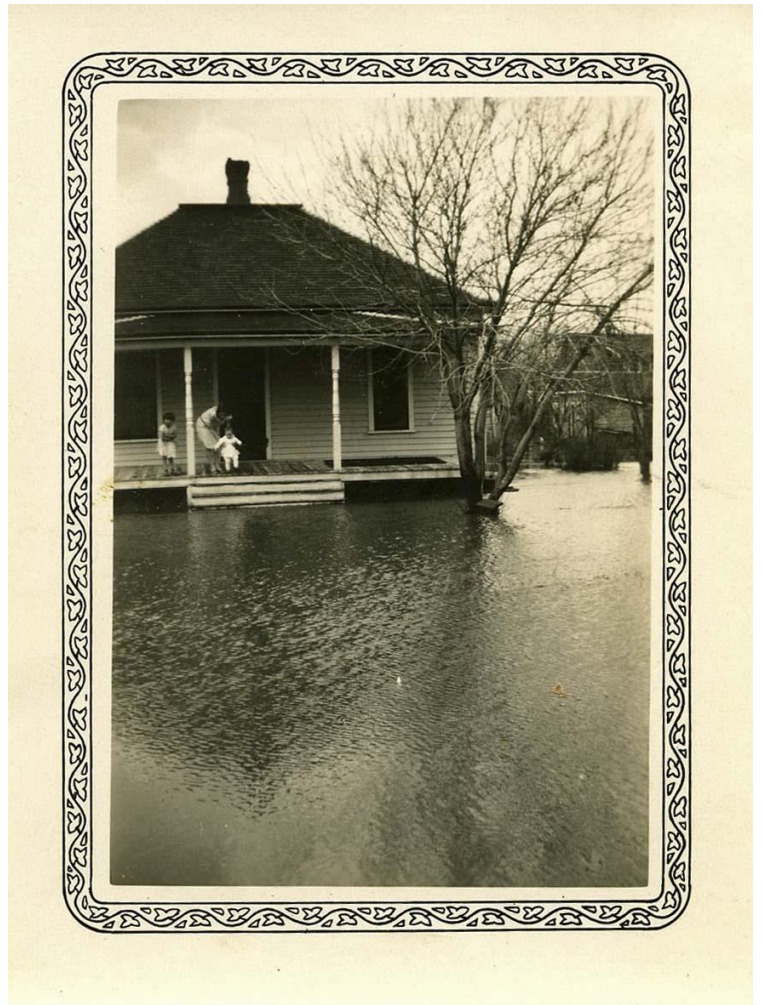


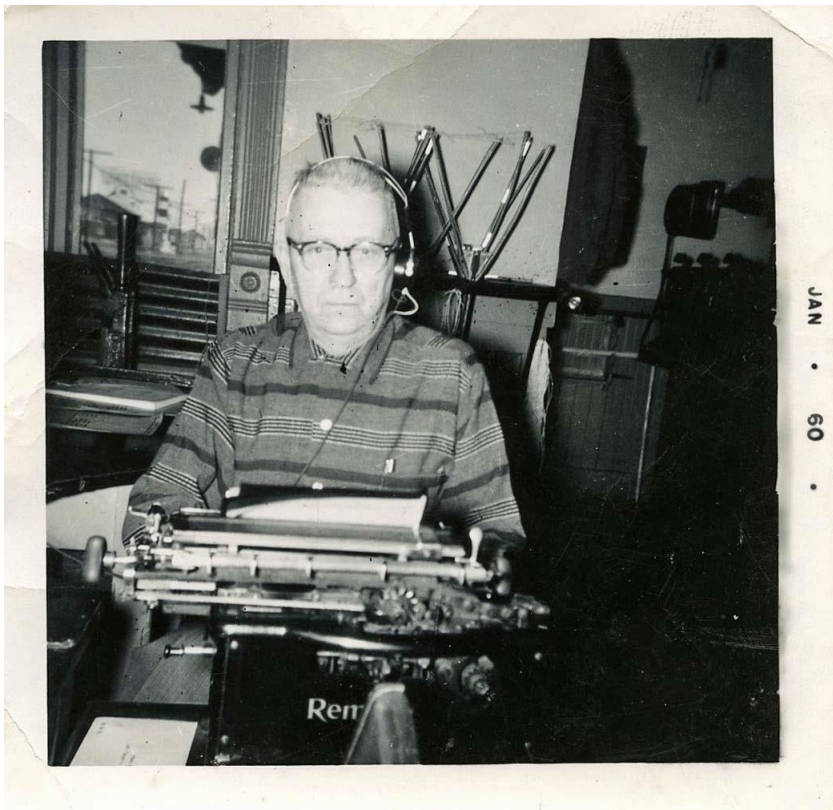
From the album of Jim Mowrey...



James Mowrey, age 5 months



Neighbor's house and family in Ellinwood, KS, 1939



Jim Mowrey in Santa Fe Depot ticket office, Kinsley, Kansas. The bay window in the background is looking east. Order hooks are in the background.

January, 1960

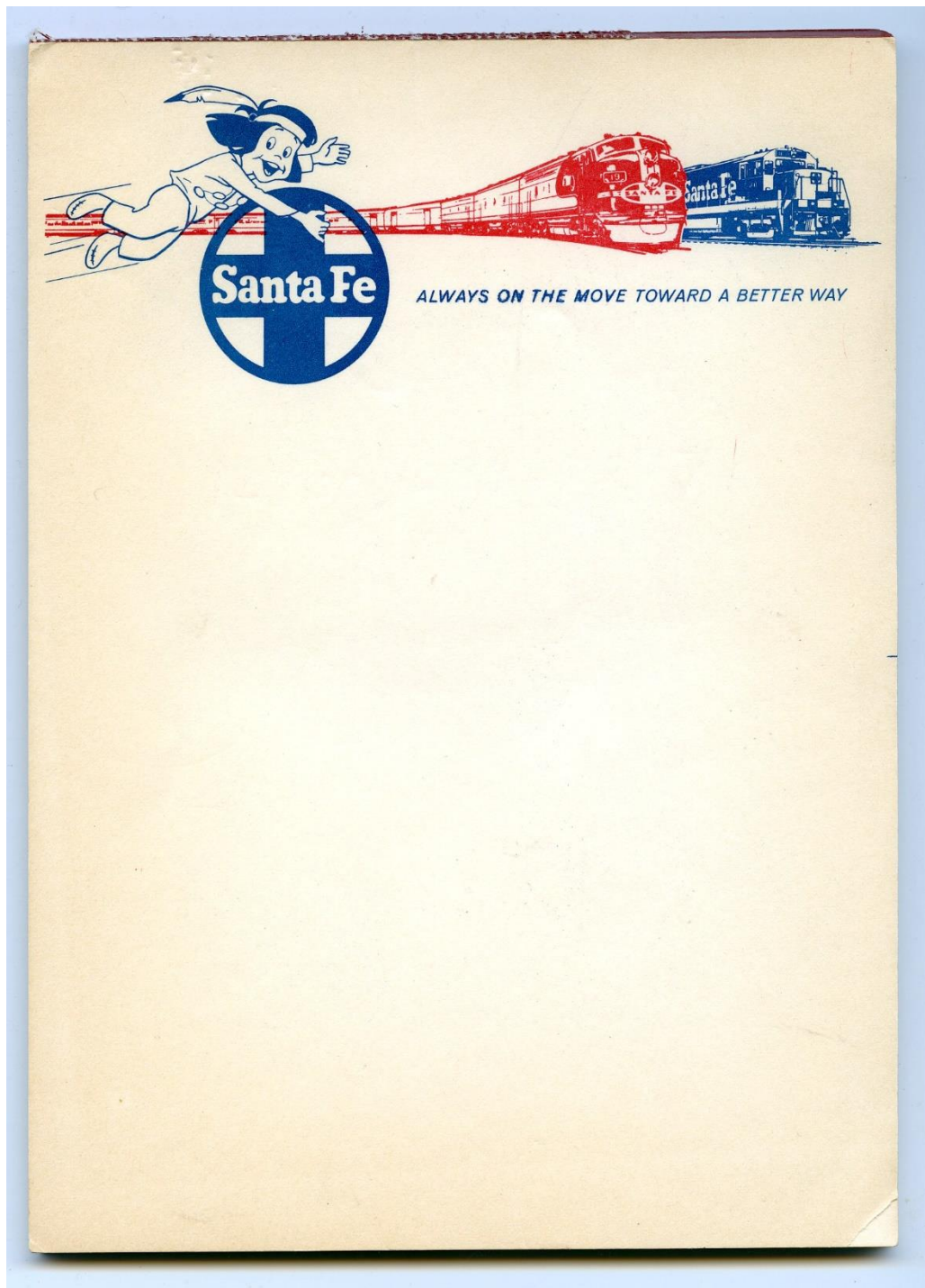


## July 29, 1960 Santa Fe train wreck in Kinsley, Kansas



### Two Trains Wreck in Kinsley

"A brake shoe came loose on a box car on the Santa Fe last Friday morning and subsequently caused the derailment of twenty-one box cars of two freight trains. The trains were passing each other on two main lines when the brake shoe caught in the track and began the derailment. The cars jackknifed into the other train and the chain derailment of both trains began. The wreck occurred at 2:45 a.m. and the track was cleared that afternoon for service."



Santa Fe Railroad notepad